

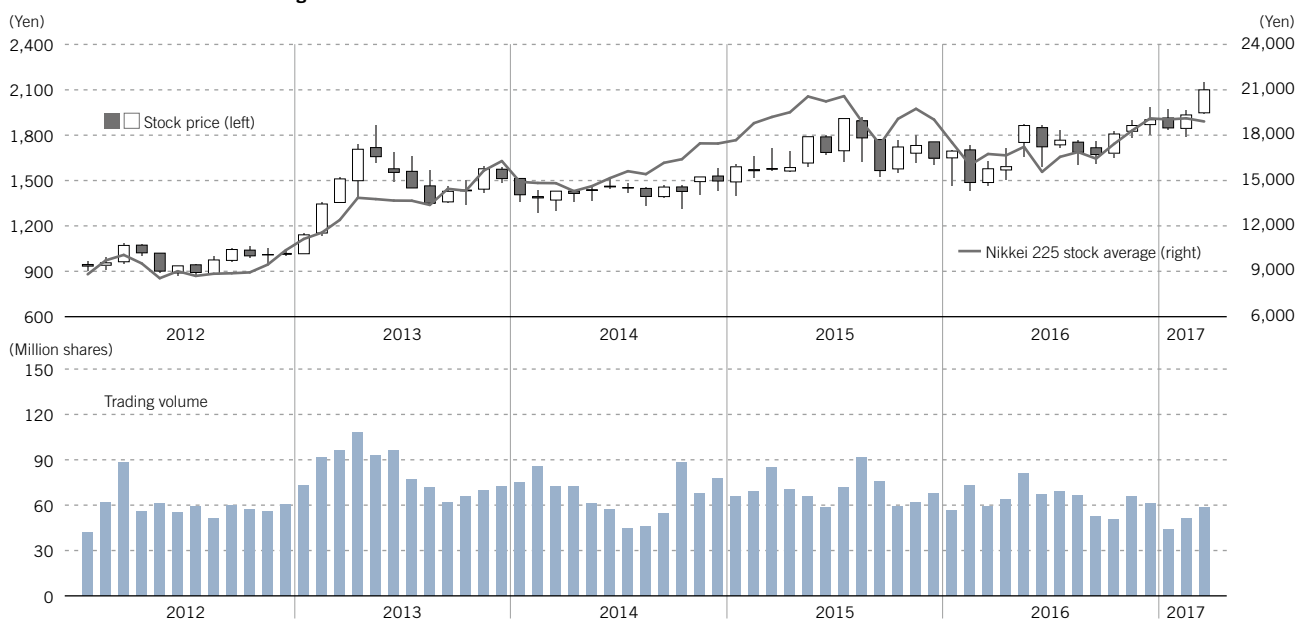
Investor Information (As of December 31, 2016)

Information Related to Total Shareholders' Return

	2012	2013	2014	2015	2016
Year-end stock price (Yen)	1,012	1,513	1,497	1,648	1,902
Dividends per share (Yen)	29	36	38	38	39
Cumulative dividend income per share (from fiscal 2013, Yen)	–	36	74	112	151
Amount of increase in stock price per share (from fiscal 2013, Yen)	–	501	485	636	890
Total shareholders' return per share*					
Absolute amount (Yen)	–	537	559	748	1,041
Rate (%)	–	53.1	55.2	73.9	102.9

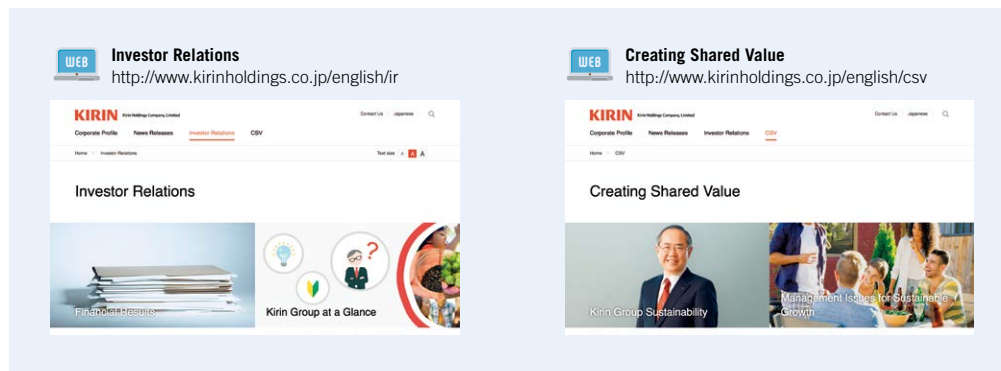
* Total shareholders' return per share is calculated at fiscal year-ends, starting in fiscal 2013, as if the investment was made at the closing stock price at the end of fiscal 2012.

Trends in Stock Price and Trading Volume



Corporate Website

More detailed activity information and data can be found on Kirin Holdings' corporate website.



Trade Name

Kirin Holdings Company, Limited

Head OfficeNAKANO CENTRAL PARK SOUTH, 10-2, Nakano 4-chome,
Nakano-ku, Tokyo 164-0001, Japan**Date of Incorporation**

February 23, 1907

Note: On July 1, 2007, accompanying the shift to a pure holding company structure,
Kirin Holdings Company, Limited changed its name from Kirin Brewery Company, Limited.**Paid-In Capital**

¥102,045,793,357

Number of Authorized Shares

1,732,026,000

Number of Outstanding Shares

914,000,000

Number of Shareholders

169,600

Number of Employees (Consolidated)

39,733

General Meeting of Shareholders

March 30, 2017

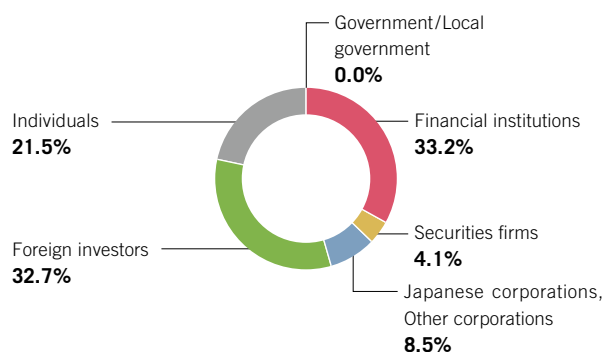
Stock Listings

Tokyo, Nagoya, Fukuoka, Sapporo

Transfer AgentMitsubishi UFJ Trust and Banking Corporation,
Corporate Agency Division,
10-11, Higashi-suna 7-chome, Koto-ku, Tokyo 137-8081, Japan
Tel: +81-3-6701-5000 (business days from 9:00 to 17:00)**Depository**JPMorgan Chase Bank, N.A.
JPMorgan Service Center
P.O. Box 64504 St. Paul, MN 55164-0504, U.S.A.
Tel: +1-800-990-1135 (toll-free)
Tel: +1-651-453-2128 (outside U.S.A.)**Major Shareholders**

Name of Shareholder	Number of Shares Held (Thousand shares)	Percentage of Total Shares Outstanding
The Master Trust Bank of Japan, Ltd. (Trust account)	53,885	5.9
Japan Trustee Services Bank, Ltd. (Trust account)	41,901	4.6
Meiji Yasuda Life Insurance Company	32,996	3.6
Japan Trustee Services Bank, Ltd. (Trust account 4)	17,463	1.9
STATE STREET BANK AND TRUST COMPANY 505225	17,058	1.9
The Bank of Tokyo-Mitsubishi UFJ, Ltd.	14,501	1.6
STATE STREET BANK WEST CLIENT-TREATY 505234	12,644	1.4
Japan Trustee Services Bank, Ltd. (Trust account 7)	12,523	1.4
THE BANK OF NEW YORK MELLON 140044	11,179	1.2
THE BANK OF NEW YORK MELLON SA/NV 10	11,107	1.2

Note: Calculations for the percentages of total shares outstanding above exclude the 1,484,000 shares of treasury stock held by the Company.

Shareholder Composition**Composition by Number of Shares Held**